

Course Name: Civil Engineering
 Drawing 2
 Couse Code: CIE 122
 Grade: 1
 Department: Civil Engineering
 Term No: 2

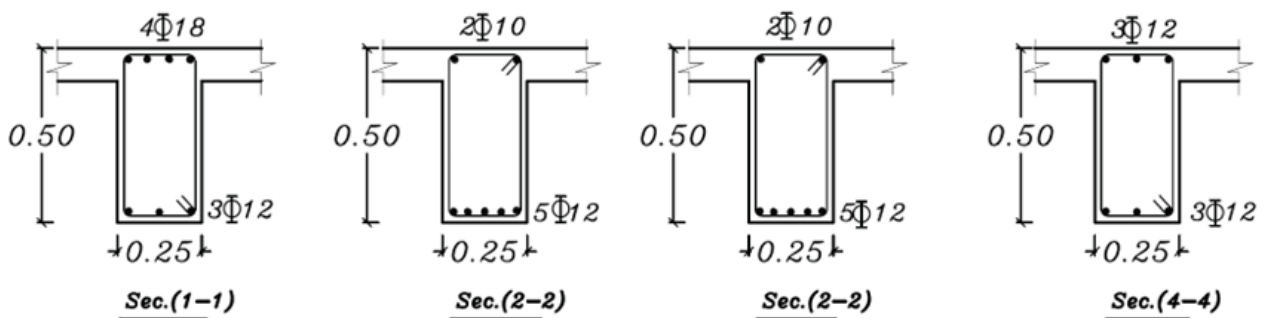
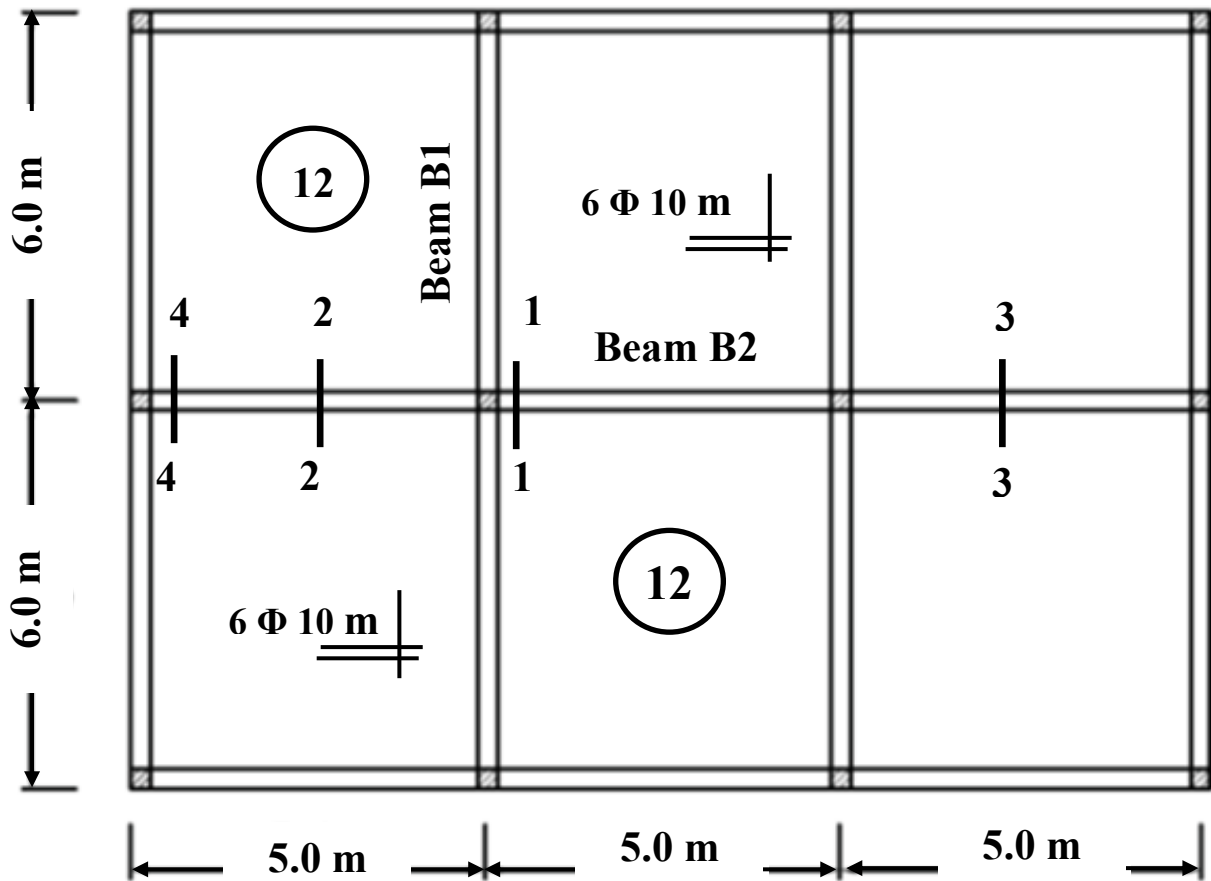


Final Exam
 Date: 14/6/2023
 Time: 3.0 hour.
 No of pages: 2
 No of questions: 2
 Total mark: 75 marks

Question 1: (40 Marks) (C1, a2 – C12, b1)

For the given solid slab plan:

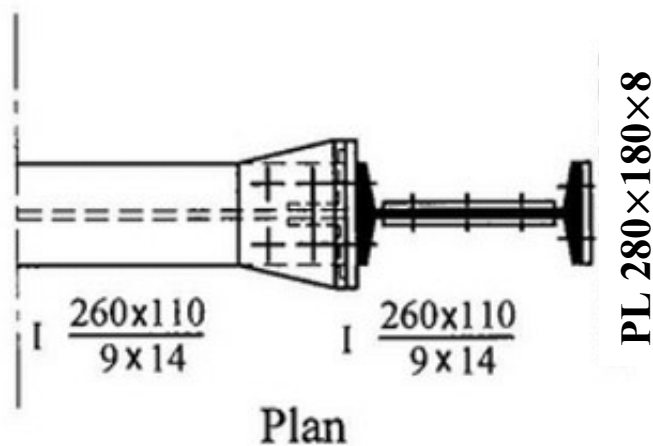
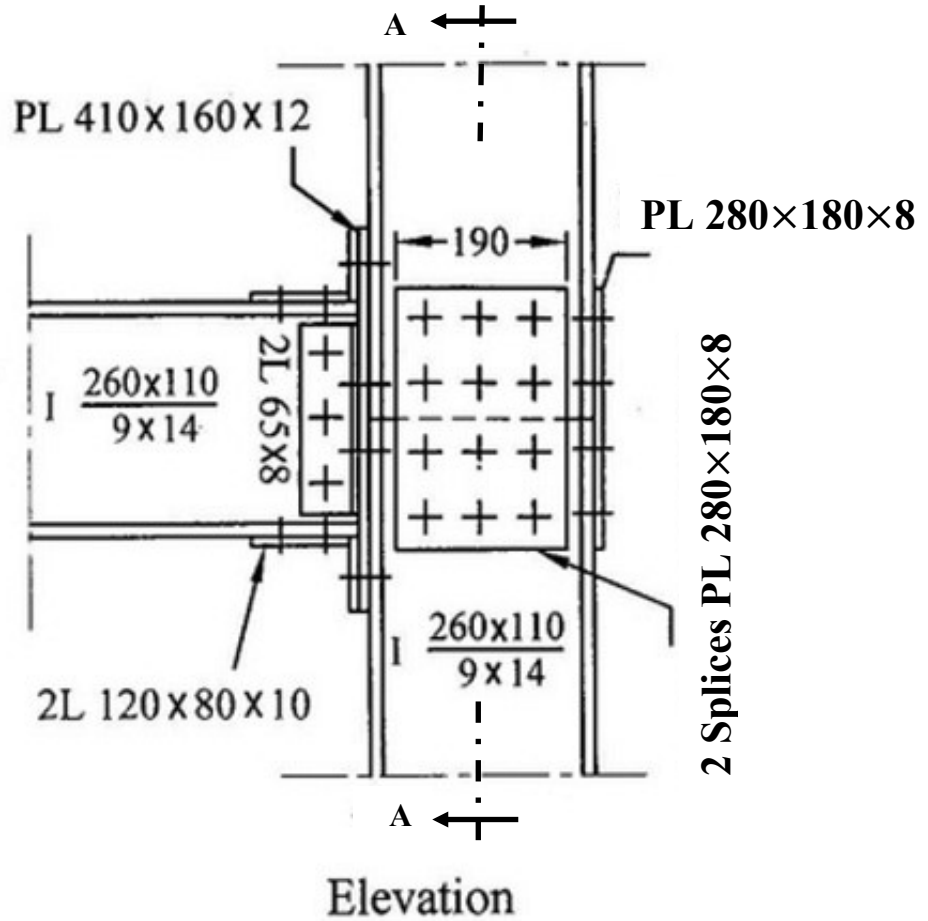
- (1) Draw the details of reinforcement (RFT) to scale 1:50, and show the details of slab RFT (slab thickness 12 cm, slab RFT is $6 \Phi 10$ in both directions). (15 marks)
- (2) Draw the cross-sections 1-1, 2-2, 3-3, and 4-4 for the beam B2 to scale 1:10 (10 marks)
- (3) Draw a section elevation for the beam B2 showing the RFT details (Scale 1:25). (15 marks)



Question 2: (35 Marks) (C1, a2 – C12, b1)

For the shown steel column beam connection: Draw to scale 1: 10

- (1) The given Elevation (10 marks)**
- (2) The Plan, (10 marks)**
- (3) and the Lift Side View at section A-A. (15 marks)**



Best regards
 Assoc. Prof. Dr./ Mohamed ELSayed Gabr

Model answer

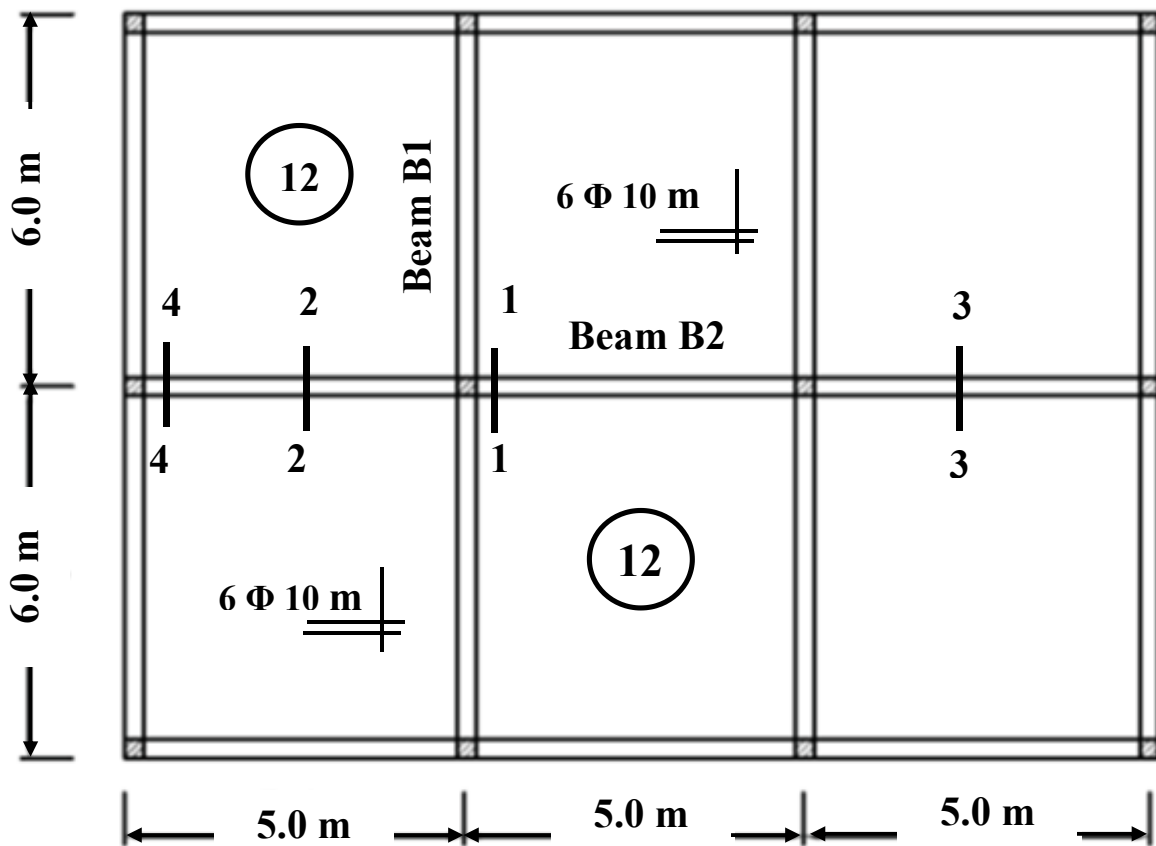
Question 1: (40 Marks) (C1, a2 – C12, b1)

For the given solid slab plan, draw the details of reinforcement (RFT) to Scale 1:50, and show the details of slab RFT (slab thickness 12 cm, slab RFT is 6 Φ 10 in both directions). (15 marks)

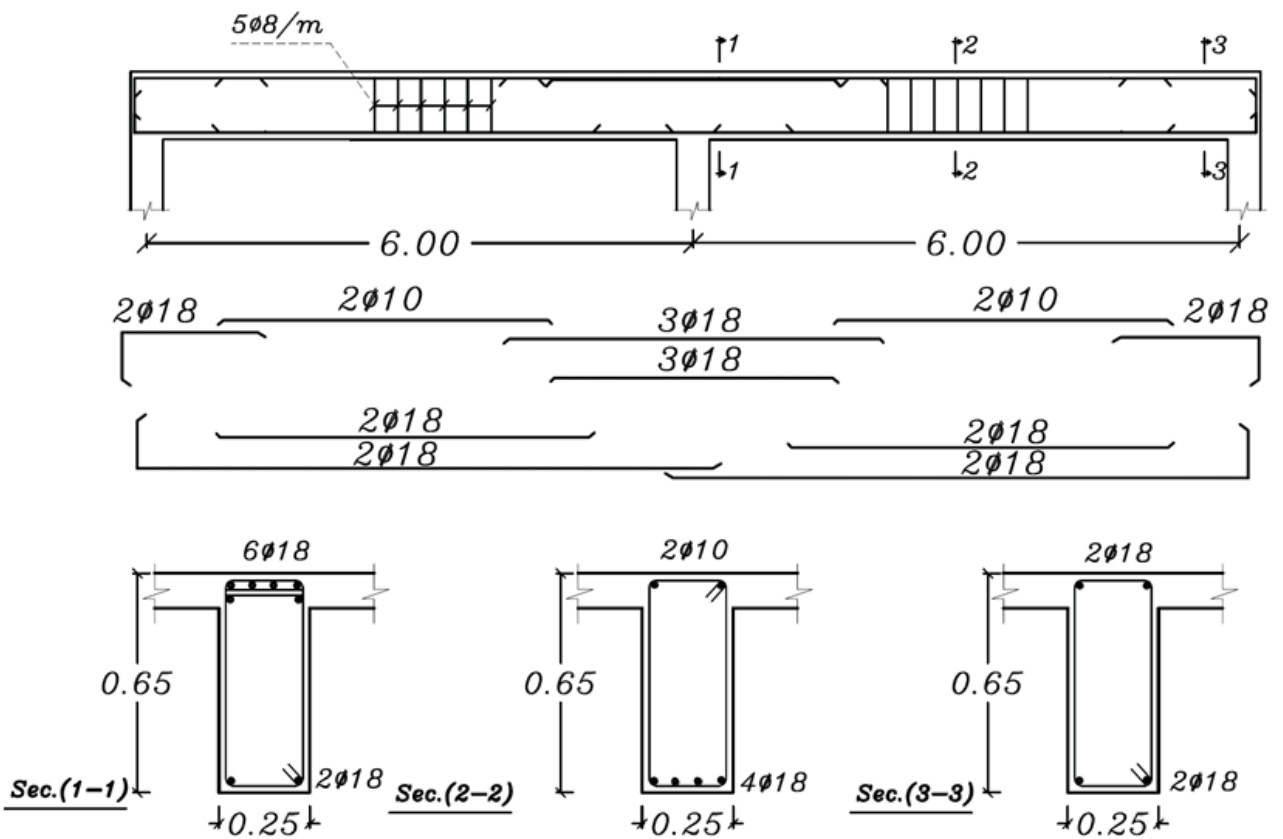
(2) Draw the cross-sections 1-1, 2-2, 3-3, and 4-4 for the beam B2 to scale 1:10

(10 marks)

(3) Draw the section elevation for the beam B2 showing the RFT details (Scale 1:25). (15 marks)



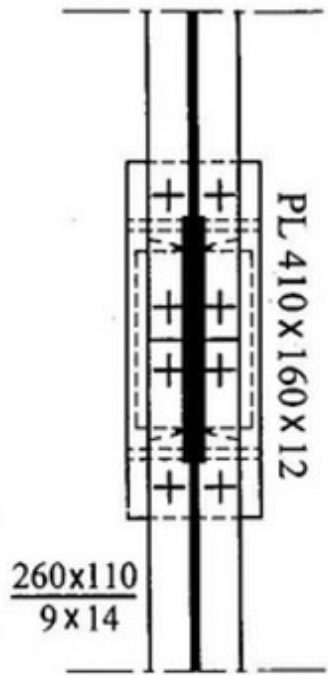
4) Detail of RFT. of B1



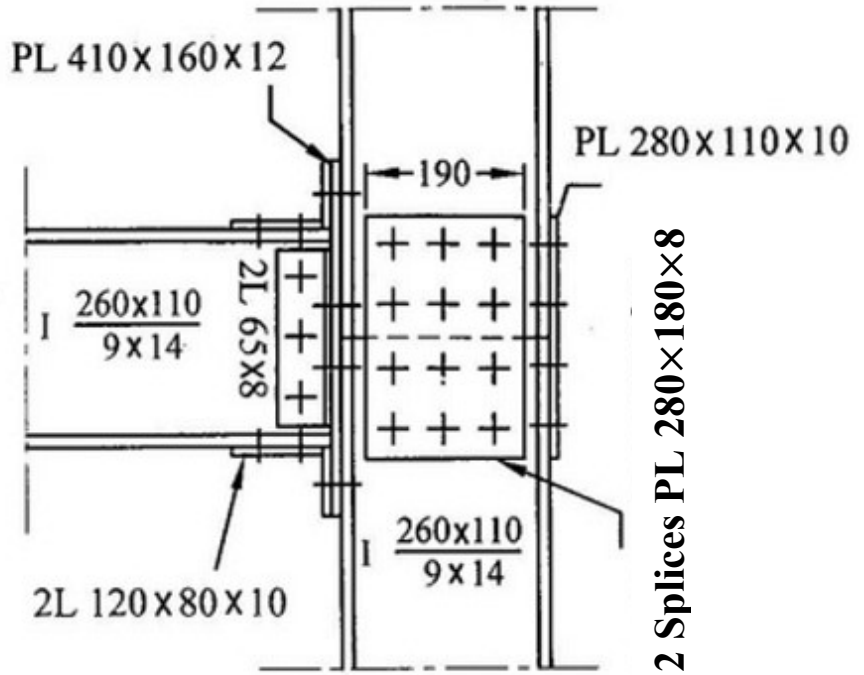
Question 2: (35 Marks) (C1, a2 – C12, b1)

For the shown steel column beam connection Draw to scale 1: 10

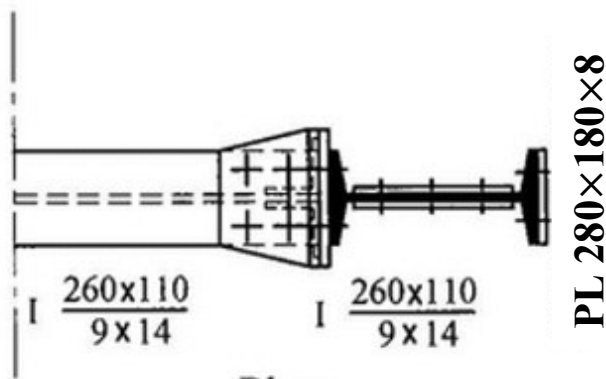
- (1) The given Elevation (10 marks)**
- (2) The plan, (10 marks)**
- (3) and Lift Side View section at A-A. (15 marks)**



Sec. Side View



Elevation



Plan